

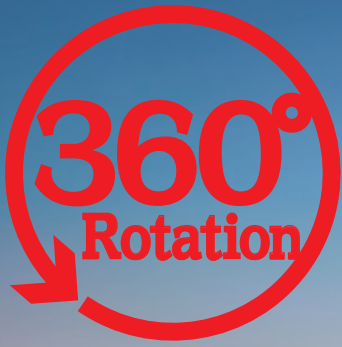
Pioneer of Rubber Crawler Carriers



**MOROOKA**

# MST110CR

360°Rotation "KURU-KURU" Carrier Series



**11t**  
**Payload**



- Auto Deceleration•Eco mode
- Anti Stall Function
- Hardox® In My Body certified dump bed
- Electric Control Joystick

## CAT C7.1 Engine Tier 4 Final/EU Stage V

Greatly reduces emissions of PM (particulate matter) and NOx (nitrogen oxides),  
Contributes to environmental protection.



## Consideration for the Environment

### Conforming to Tier4 Final/EU Stage V

It is equipped with the environmentally friendly EU Stage V compatible engine.

### Auto Deceleration

When idling continues for a certain period of time, engine speed automatically lowers to improve fuel efficiency, noise and CO<sub>2</sub> emission are also reduced.

## Contributing to Productivity improvement

### Improvement of Driver-ability and Operability

18% faster running speed than conventional model  
Newly adapted joystick reduces operator fatigue and provides intuitive operation feeling.

### HST Speed Mode

Pursuing ease of use by setting 3 modes in low speed range in addition to high speed and low speed range

### Improvement of durability in dump bed

Introduction of wear-resistant steel Hardox® greatly improves durability of dump bed and contributes reduction of running cost.

Specifications			
MODEL		MST110CR	
PERFORMANCE	Maximum Payload	kg	11,000
	Loading Capacity (Struck/Heaped)	m <sup>3</sup>	4.36 / 6.17
	Speed (High/Low)	km/h	11.8 / 7.6
	Ground Pressure (Empty/Laden)	kPa	35.4 / 59.7
MACHINE DIMENSION & WEIGHT	Machine Weight	kg	16,000
	Overall Length	mm	6,000
	Overall Width (Transport)	mm	3,650 (2,980)
	Overall Height	mm	3,280
	Ground Clearance	mm	570
	Crawler Width	mm	800
DUMP BED (INNER)	Length×Width×Height	mm	3,050 × 2,750 × 635
ENGINE	Name	CAT C7.1	
	Nominal Output	kW(HP)/rpm	186 (252.9) / 2,200
TANK CAPACITY	Fuel Tank Capacity	ℓ	300
	HST Tank Capacity	ℓ	154
	DEF Tank Capacity	ℓ	32
Name and Type of The Vehicle		MST-2200VDR-VIA	
Name and Model of Prime Mover		YDS-C7.1B	
Emission Standard		Tier4 Final EU Stage V	

● Specifications are subject to modify without notice

## Pursuing Safety and Comfort

### ROPS/FOPS Cabin

ROPS/FOPS certified cabin is equipped as standard feature.

### Improvement of Visibility

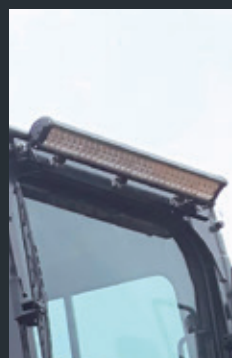
Visibility is improved by 70% against previous model.  
Rear-view camera visualizes blind spots and improves safety.

### Improvement in Steps located at center front

Durability of the steps accessing to inspection and maintenance points has been improved

### Renewal of locking system in dump bed

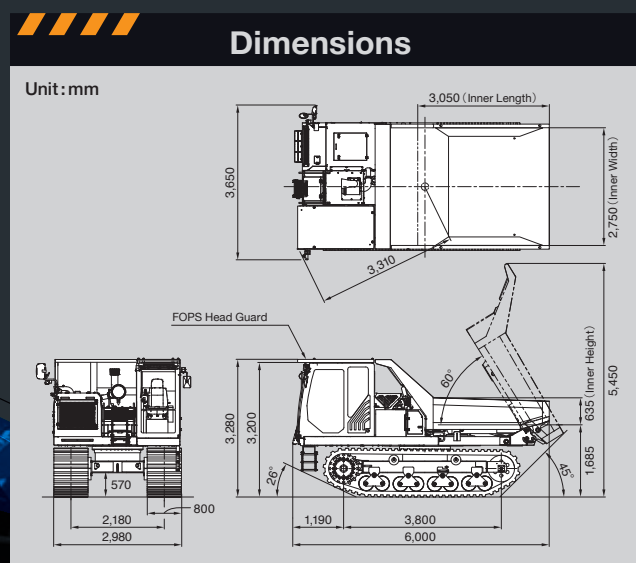
Renewal of locking system in dump bed from bar type to pin type improves workability and safety.



LED Light



Operator Seat



**MOROOKA**  
Morooka Co., Ltd.



URL: [www.morooka.com](http://www.morooka.com) (English) [www.morooka.co.jp](http://www.morooka.co.jp) (Japanese)  
Postal Code : 301-0031  
358 Shoubeeshindenmachi, Ryugasaki city, Ibaraki Prefecture, Japan  
TEL : +81-297-66-2111 TEL : (Overseas Sales Dept.) : +81-297-86-9034

## CONTACT