

Pioneer of Rubber Crawler Carriers



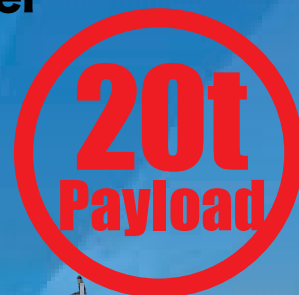
MOROOKA

MST-4000VDR

360° Rotation "KURU-KURU" Carrier

**Largest
in the Series**

20 tons Payload Crawler Carrier



NOW ON SALE

- Electric Joystick Lever
- Cruise Control
- HARDOX® applied dump body
- Highly Visible Side and Back Camera
- Auto Deceleration·Eco mode
- Durable Bridgestone crawler (850mm width)

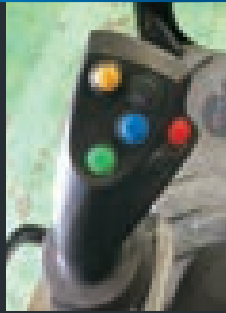
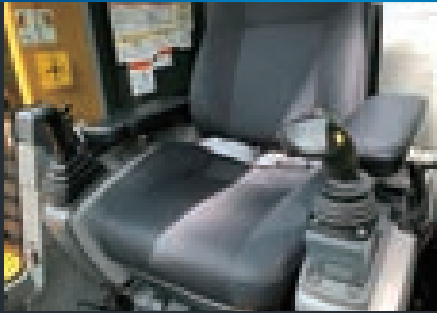
**CAT C9.3B Tier 4
Final/EU Stage V**

Greatly reduces emissions of PM (particulate matter) and NOx (nitrogen oxides),
Contributes to environmental protection.

*"KURU-KURU" means upper structure rotating 360 degrees.

MST 4000VDR

New Operability by Joystick Lever



New Electric Joystick Control

It realizes high operability and reduction of operator fatigue. It can be controlled Hi/Lo speed, spin turn, slow travel mode, and horn on lever.



7 inches LCD monitor

Wide monitor displays product information.

Massive Payload & Durability

Largest Payload in the Series

Payload 20 tons.

Durable Dump Body

HARDOX® steel on bottom of dump body.

Bridgestone Rubber Crawler

Durable rubber crawler (850mm width).

Enhanced operability on rough terrain.

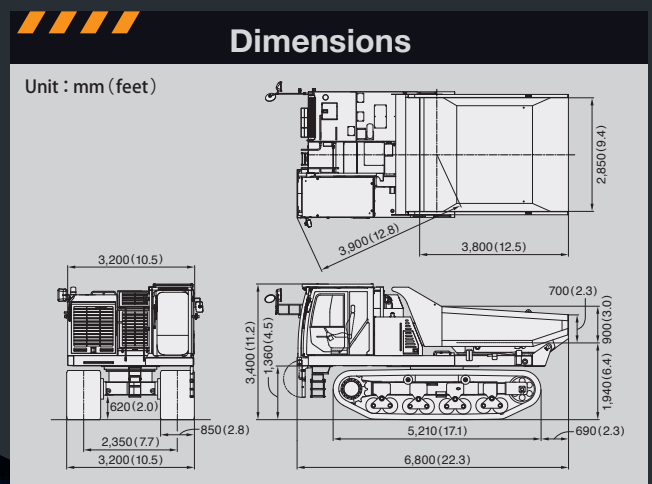


New Feature & Safety Design

- **Auto Deceleration** — Automatically reduces engine speed when idling. Reduces noise, emissions and fuel consumption.
- **Eco-mode** — It helps maximize the fuel economy.
- **ROPS/FOPS cabin**
- **Enhanced visibility Dimensions** by large mirror and two cameras.

Specifications		
Model		MST-4000VDR
Machine Weight	kg	24,740
Maximum Payload	kg	20,000
Engine Model		CAT C9.3B
Nominal Output	kW/rpm	310 / 2,200
Overall Length	mm	6,800
Overall Width	mm	3,200
Overall Height	mm	3,400
Dump Body Dimension (L×W×H)	mm	3,800 × 2,850 × 700
Ground Clearance	mm	620
Swing Radius	mm	3,900
Crawler Width	mm	850
Drive System		HST
Travel Speed Hi/Lo	km/h	11.2 / 7.3
Ground Pressure (Empty/Laden)	kPa	45.0 / 81.4
Fuel Tank Capacity	liter	400

● Specifications are subject to modify without notice



MOROOKA

Morooka Co., Ltd.

To open a new frontier where no path has ever existed



CONTACT

Postal Code : 301-0031

358 Shoubeeshindenmachi, Ryugasaki city, Ibaraki Prefecture, Japan

TEL : +81-297-66-2111 FAX : +81-297-66-3110

TEL : (Overseas Sales Dept.) : +81-297-86-9034

URL : www.morooka.com (English)

www.morooka.co.jp (Japanese)